

eliminating racism  
empowering women  
**ywca**  
Alton



# 2019 Annual Report



**YWCA IS ON A MISSION**



**YWCA** of Alton  
304 East 3rd. Street  
Alton, IL 62002  
618.465.7774

altonywca.com  
info@altonywca.com

# YWCA IS ON A MISSION

YWCA of Alton's MISSION is to eliminate racism, empower women and promote peace, justice, freedom and dignity for all.

For over 100 years, the YWCA of Alton has been providing the community with programs and services in these domains: Child Enrichment, Wellness, Women's Empowerment and Racial and Social Justice.



Headquarters are located downtown Alton at 304 East 3rd Street. Our service area extends to Wood River, Roxana, Godfrey, and Hartford.



"I remain firmly committed to the philosophy of non-violence in the face of oppression. I am not comforted that many of today's young people are unaware of their roots, of those who gave a full measure of devotion to the cause of racial justice. But I look forward — not to the past."

- Josephine Marley Beckwith

# BECAUSE OF YOU WE CAN

YWCA of Alton has provided a social support system for our community and has been a great resource for the empowerment of women and the elimination of racism. We continue to serve the region and are revitalizing the services and programs to better serve our community.

**\$35**

Can provide one child's registration fees for Child Enrichment Program

**\$50**

Can provide a youth with dance instruction or basketball camp

**\$75**

Provides meals and drinks for one Community Tutoring session.

**\$100**

Provides a senior with a year long Fitness Club membership

**\$250**

Can provide a youth with dance instruction or basketball camp

**\$500**

Provides 5 weeks of Before/After Care for Child Enrichment program

To make a gift, please visit [www.altonywca.com](http://www.altonywca.com) and look for the **DONATE NOW** button.



# TABLE OF CONTENTS

---

<b>Introduction</b>	
YWCA is on a Mission	2
Message from the President	4
<b>Programs</b>	
Child Enrichment	5
Girls Circle	7
Community Tutoring	9
Racial & Social Justice	11
Women's Programs	13
Wellness	15
<b>Financials</b>	
Donations	17
Special Funds	19
Program Fees	21
<b>Honor Roll of Donors</b>	
Thank You!	23

---

## MESSAGE FROM THE BOARD PRESIDENT

Barbara Morrissey McGrew

---



Dear YW Friends:  
Wow! What a year 2019 was!

YWCA of Alton has been serving the community for over 100 years. This year at the YWCA, has been a great year. We have experienced many successes this year through our program initiatives and fundraising events.

With increased facility rentals, Marquette High School practices, Midtown Moms and Showtime Productions, our building has never been this full. Our Child Enrichment program saw its biggest enrollment numbers ever this year as well.

We honored strong, dynamic women in the community through our biggest event of the year, the Annual Women of Distinction Gala, which brought together the wonderful

This year we rolled out a new youth program – Girls Circle. This program is a structured support group designed to promote girls’ growth and development in a safe place. We held 5 circles for school aged area girls with the help of committed community leaders as facilitators.

Our YWCA staff showed great professionalism and continued to show their hard work and dedication to selflessly serving the community. I want to thank our network of volunteers, who put the needs of others before their own and shared their time, talent and resources to advance the YWCA’s mission.

As we look ahead to 2020, we hope you will be a big part of the next chapter of our YWCA of Alton story.

**BOARD PRESIDENT**  
**BARBARA MORRISSEY MCGREW**

## BOARD OF DIRECTORS

Barbara Morrissey McGrew  
**PRESIDENT**

Cameo Foster  
**PRESIDENT ELECT**

Gail Donnelly Bader  
**TREASURER / SECRETARY**

### MEMBERS

Dr. Wendy Adams  
Erica Bratton  
Lisa Brown  
Denise Collum West  
Theresa Franklin  
Tawnya Hooper  
Erin Kochan  
Julie Schranck



### ADMINISTRATIVE STAFF

Dorothy Hummel  
**EXECUTIVE DIRECTOR**

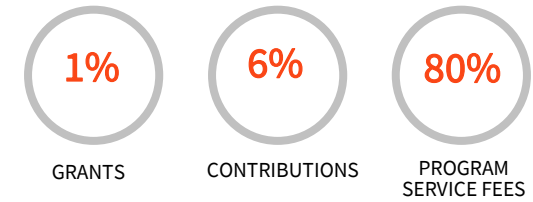
Barb Paisley  
**BOOKKEEPER**

Kathy Holder  
**CHILD ENRICHMENT DIRECTOR**

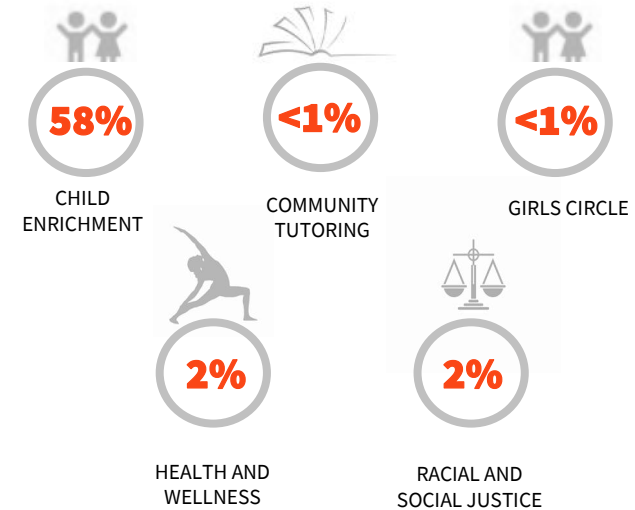
Kaitlyn Smith  
**ASSISTANT CHILD ENRICHMENT DIRECTOR**

## 2019 SOURCES

**\$475,618**  
TOTAL SOURCES



## 2019 EXPENSES BY PROGRAM



---

## CHILD ENRICHMENT

---



This program is designed to provide an atmosphere for children that facilitates their learning and sense of self in a safe and educational environment.

We promote learning through a series of activities in a range of disciplines including science, arts and cultural diversity.

15 Holiday Camps and 2 Summer Camps were held including Winter and Spring Break. 39 students were served in Alton and 37 were served in Roxana totaling 76 students in Holiday or Summer Camp. Themes for these Camps included “Around the World,” where the children learned about a new country each week.



**189** children served  
CHASI and DCFS Collaborations accepted

**4** site locations  
YWCA Alton, North Elementary in Godfrey, Lewis & Clark Elementary in Wood River, and Ivy Heights Church in Roxana

**2** Summer Camps  
at Alton and Wood River sites



YWCA of Alton’s Child Enrichment curriculum provides academic support for area school children. The curriculum revolves around STEAM (Science, Technology, Engineering, Arts and Math). The children benefit from our focus on teaching gender equality, tolerance and racial equality.

---

# GIRLS CIRCLE

---



Girls Circle is a structured support group for girls ages 9-18 designed to promote girls' growth and development in a safe place among peers. YWCA of Alton provides this program at no cost.

### 6 Step Format

- \* Opening Activity
- \* Theme introduction
- \* Check-In
- \* Activity
- \* Sharing of activity
- \* Closing

This program is evidence based with demonstrated effectiveness in reducing delinquency and recidivism for girls.

**1** session per week

Girls meet for 1 to 2 hours each week building key skills and relationships.

**8-12** sessions

Per circle topic. There are 12 Girls Circle unit topics including "Being a Girl," "Body Image," and "Paths to the Future."

**50** girls served over 4 Circles



### GIRL'S TESTIMONIALS

"I learned that the girls in the group share mostly the same worries and fears as I do."

"I have learned that girls can do anything they put their minds to."

"Since starting Girls Circle, I have learned that I am strong, and I have many good qualities. I respect myself a little more now."

"After being a part of Girls Circle, I speak up more and have more confidence."

---

# COMMUNITY TUTORING

---

Community Tutoring at YWCA of Alton is an annual program aimed at preventing summer learning loss in reading and math for children grades K-5.

The program is staffed with certified area teachers and 10 volunteers, coordinated by Candace Wallace, a certified teacher with the Alton School District .

Instruction is divided by grade level and held once a week for six weeks. The children receive reading and math instruction, small meals and enrichment activities each session.



- 1** session per week  
For students with various financial capability
- 6** sessions  
With a fun day in week 7 full of celebration, games, activities, food and prizes
- 85** students  
Served in the program in 2019



The **Community Tutoring** program is popular among area youth and the results are positive. In 2019, data showed there was no summer learning loss in reading and math.

This program would not succeed without the collaborations with Candace Wallace of Scholars on the Rise, Joanne Adams providing lunches, the support from the Alton Foundation and Alton Community Service League.

---

## RACIAL AND SOCIAL JUSTICE

---

**Eliminating racism** is at the Heart of YWCA of Alton. We believe that an enhanced understanding of racial justice issues will promote peaceful relationships and create a safe environment for all community members to thrive.

Our staff and some community members participated in Anti-Bias and Diversity Training, Anti-Semitism and Anti-Discriminatory training.



**Stand Against Racism** is a signature campaign of YWCA USA, calling action individuals to create change through action in their own lives and communities. Our Stand was held in April with a great representation within the Alton community. A speaker from the International Institute of St. Louis did a presentation on immigrants (add more)



**1** session per week  
For students with various financial capability

**6** sessions  
With a fun day in week 7 full of celebration, games, activities, food and prizes

**75** students  
Enrolled in the program in 2019



Debbie Ming Mendoza, Madison County Clerk, spoke at our showing of *“Rigged: The Voter Suppression Playbook”* about the efforts Madison County is taking to increase voter turnout and involvement in elections.

Special thanks to Simmons, Hanly, Conroy Law Firm for their continued generosity of allowing us to use their auditorium for our screenings.

2019 was a busy year for our Racial and Social Justice Program. We showed *“Rigged: The Voter Suppression Playbook”*, *“Decade of Fire”*, and *“The Hate you Give”* for our film series.



---

## WOMEN'S PROGRAMS

---

### COFFEE TALKS

Concerned about women's health and wellness, YWCA of Alton started a series of "Coffee Talks" to address various topics. Community leaders and specialists were brought in to lead the discussions and provide information for our talks this year.

Talks this year included Food and Nutrition, Depression and Self Harm, Sickle Cell Disease, and a talk on Balance and Self Care.



### WOMEN'S EMPOWERMENT SUMMIT

This year's 2nd Annual summit theme was "Mastering Your Mindset and Finances". This conference provided crucial information from respected community leaders including Sherry McCrady, Sheila Goins, Karen Wilson, Sandy Smith and Trish Holmes.



Sherry McCrady (above) gave a lecture to women during our Women's Empowerment Summit. Sherry is the owner of Luminous Life Coaching. She led the discussion on Life Balance and Self Care.

# EMPOWHER

# WOMEN'S PROGRAMS

## WOMEN OF DISTINCTION

For almost 3 decades, the YWCA of Alton has been honoring women who are making a difference in the Riverbend. This year, we celebrated 10 dynamic women;

- \* Yolanda Crochrell
- \* Megan Williams
- \* Dana Adams
- \* Page Selby
- \* Virginia Ilch
- \* Amy Golley
- \* Plesetta Clayton
- \* Sarah Woodman
- \* Candace Wallace
- \* Kimberly Baalman-Eberlin



## JOSEPHINE MARLEY BECKWITH FUTURE LEADERS SCHOLARSHIP

Inspired by Mrs. Beckwith's life, the Women of Distinction Committee initiated a scholarship focused on developing leadership and community service. This year we awarded two new young women and renewed 5, \$1,000 scholarships

**2** new awarded scholarships  
Ashlynn Green and Regan Windau

**5** renewed scholarships  
Kathleen Botterbush (2nd)  
Kiara Hardimon (3rd)  
Anna Johnson (3rd)  
Taylor Mateyka (3rd)  
Bailee Warsing (4th)



New 2019 JMBFL recipients, Ashlynn Green and Regan Windau pictured above.

Scholarship winners are celebrated along with the Women of Distinction at the annual Gala. Funding for the JMBFL Scholarships primarily come from the Women of Distinction Academy

# HONOR ROLL OF DONORS

*All gifts, great or small are appreciated. Listed below are gifts received in 2019. If we have inadvertently left your name out, please accept our apologies and notify Dorothy Hummel, Executive Director, at (618) 465-7774 or dhummel@altonywca.com.*

## **Platinum Sponsors**

Ameren Illinois  
IlliniCare Health  
Morrissey Contracting Company, Inc.  
Phillips 66 Wood River Refinery  
Simmons Hanly Conroy

## **Silver Sponsor**

Douglas and Gail Donnelly Bader

## **Bronze Sponsors**

Absolute Health Care Services  
AFSCME Local 1805  
Alton Casino, LLC  
Alton Memorial Hospital  
Busey Bank  
CNB Bank & Trust, N.A.  
IL American Water  
M. Hubbard Construction  
PPG Paints  
River Bend Chiropractic Center  
Serenity Title & Escrow, Ltd.  
Sherwin Williams  
T. Morrissey Corporation

## **Women of Distinction Donors**

A Precious Organization  
Alton Community Unit School District  
No. 11  
Alton Housing Authority  
Arrow Signs & Outdoor Advertising, Inc.  
City of Alton  
District Council Painters #58  
Dr. Wendy Adams  
Gerard Fischer and Associates, LLC  
IBEW Local Union 649  
Illinois General Assembly, 111th District  
Illinois General Assembly, 112th District  
Junior League of Greater Alton  
Leonard F. Berg Attorney  
Midwest Radiological Associates, P.C.  
RiverBend Growth Association

River Bend Chiropractic Center  
3 Charming Chicks  
Madison County ,County Clerk  
Donnewald Distributing Co  
Morrissey Contracting Co., Inc.  
Morrissey Contracting Co., Inc.  
Fred Bright State Farm Insurance  
Companies  
C.J. Schlosser & Company, L.L.C  
Jos. Ward Painting Company  
The Yoga Connection  
Dennis Crammer  
My Just Desserts  
Laura Munson Dewein  
Stephanie Elliott  
Amy Fair  
Wells Fargo  
Gould Flooring  
Cameo Foster  
Lathrop Gage, LLP  
Village of Godfrey  
Bluff City Grill  
David & Jennifer Haney  
OSF HealthCare  
Barbara Hinson  
Tawnya R. Hooper  
Dorothy Hummel  
E. Virginia Ilch  
Brighthway Imaging  
St. Peter's Hardware and Rental Inc.  
Missouri General Insurance Agency Inc.  
Johnco Construction Inc.  
Jarrett Industries  
Shelter Insurance  
Luken Investment  
Debra A. Jacobs  
Levo-Dononhoo Law  
Peacekeepers of MLV per LB  
Second St. Development LLC  
R.D Lawrence Construction Co. Ltd.  
Fischer Lumber  
Alton Marina  
Joan M. Marshall  
Alanna McNelly  
Jen Mechanical, Inc.

1st MidAmerica Credit Union  
Absolute Health Care Services, LLC  
Alanna McNelly  
Alton Marina  
Be Well Now  
Bliss Salon and Spa  
Chuck Schranck  
Debra A. Jacobs  
Fischer Lumber  
Global Therapy  
Holland Construction Services  
Holland Construction Services  
Illinois State Senate, 56th District  
Jarrett Industries  
Jen Mechanical, Inc.  
Jen Mechanical, Inc.  
Joan M. Marshall  
Kimara Morrisey  
Legendary Mustang Sanctuary  
Levo-Dononhoo Law  
Luciana Pastry  
Luken Investment  
Matt Horn Landmark Realty  
Mississippi Mud Pottery  
Mormino, Velloff, and Snider, P.C.  
Peacekeepers of MLV per LB  
R.D Lawrence Construction Co. Ltd.  
Riverbend Head Start & Family  
RiverBender  
Robert Sanders Waste Systems, Inc  
Say What?! Logos and Tees  
Scott Credit Union  
Second St. Development LLC  
Services  
Shelter Insurance  
Smart Choice Auto Sales  
YWCA Intermediate Yoga

## **JMBFL Donors**

Anne Davis  
Bethany Chapel  
Donna Bemis  
Gail Donnelly Bader  
Honorable Ellar Duff  
Jeannine Kelly Dever  
Kathy Buckley  
Mary Cordes  
Representative Monica  
Sandra Crawford  
Shirley Emons  
Tina Kristoff Aldridge

# Thank you

## **Josephine Marley Beckwith Future Leaders Scholarship Donors**

Anne Davis  
Barbara Gillian  
Barbara Hinson  
Barbara Morrissey McGrew  
Bethany Chapel  
Bonnie Fox  
Charlotte Johnson  
Cora Miller  
Debra Pitts  
Diana Enloe  
Donna Bemis  
Dr. D'Andrienne Jones  
Elizabeth Levy  
Eva Perkins  
Gail Donnelly Bader  
Honorable Ellar Duff  
Jeannine Kelly Dever  
Judith Roth  
Kathy Buckley  
LaDonna Whitner  
Linda Nevin  
Martha Kane  
Mary Cordes  
Mary Pat Venardos  
Mattie Jean Miller  
Nancy Whitlow  
Patty Morrissey  
Representative Monica Bristow  
Sandra Crawford  
Sarah Jane O'Neill  
Saundra Hudson  
Shirley Emons  
Shirley Portwood  
Sonjia Peacock  
Stephanie Monroe  
Suzanne Lagomarcino

Tawnya Hooper  
Theresa Franklin  
Tiana Montgomery  
Tina Kristoff Aldridge  
Valerie Peters  
Vanette McConahey

## **Annual Fund Donors**

Barbara Morrissey McGrew  
Cindy Roth  
Diane Doerr  
Douglas & Gail Donnelly Bader  
Ed & Cathy Gray  
Georgia Bratton  
Jo Greenwood  
Lisa A. Nelson  
Nancy Williams  
Page Selby  
Patty Moore  
Sonja Peacock  
Warner Henderson  
Yolanda Crochrell

## **Volunteerism**

YWCA of Alton wishes to acknowledge our special and very dedicated 100 volunteers who work tirelessly to provide us with over 500 service hours. YWCA of Alton is blessed to be a part of such a caring and generous community .